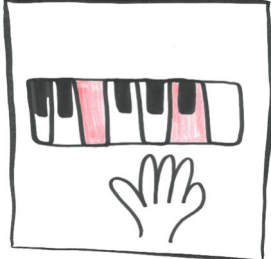
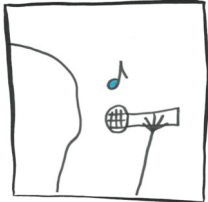
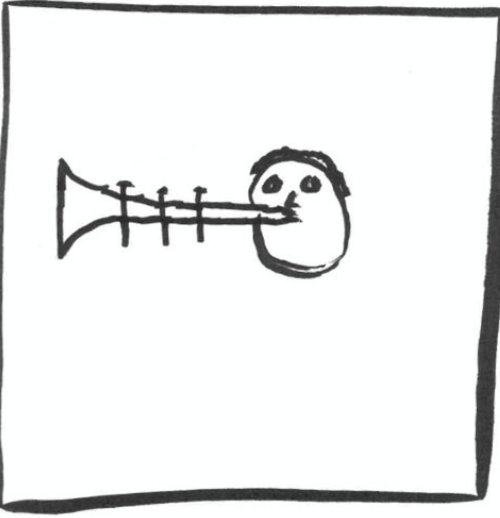
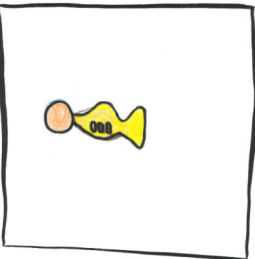
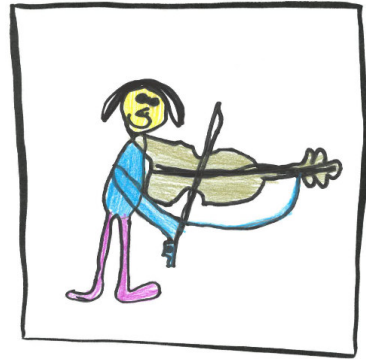
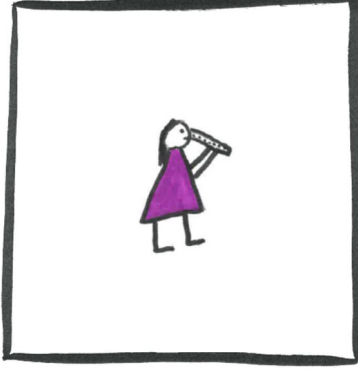
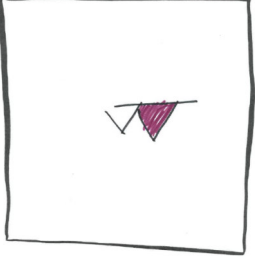
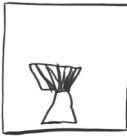
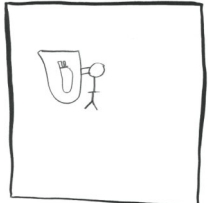
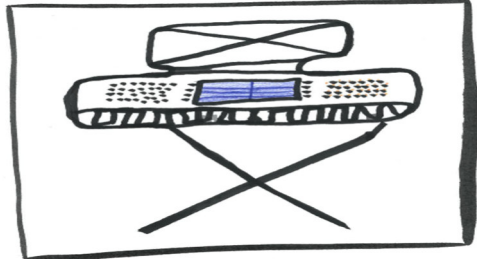


MUSIKSCHULE  
HITZKIRCH  
*Musik begeistert.*



Information in English

# OUR LESSONS

Find out more about what you can learn with us.



## PRIMARY MUSIC EDUCATION

---

- Singing and Dancing (Preschool and Reception)
- Music and Movement\* (Reception)
- Orff Xylophone for Primary School (from Year 1)
- Recorder for Primary School (from Year 1)
- Djembé Drum for Primary School (from Year 1)

\* Music and Movement is incorporated into the lesson plan for primary school pupils at the Hitzkirch, Altwis, Gelfingen, Hämikon, Ermensee and Schongau schools from Reception onwards. It is a compulsory subject offered at no cost.

## INDIVIDUAL LESSONS

---

- Weekly lesson for beginners, 30 minutes
- Weekly advanced lesson, 40 minutes or 30 minutes on request. (Compulsory lessons at secondary school always last 40 minutes.)

Parents of children in classes up to Year 2 are asked to contact us before registering them so we can confirm that we can offer the requested instrument and outline how the lessons will work.

## GROUP LESSONS

---

- Weekly lesson, 40 minutes for two people
- Weekly lesson, 50 minutes for three or four people

If we do not receive enough registrations to offer group lessons, a 30-minute individual lesson will be offered instead.

## ENSEMBLES

---

Kids Choir – Youth Choir – Recorder Ensemble – Regional Youth Music – String Ensemble – Guitar Ensemble – Rock Band

Making music as a group is a valuable activity alongside individual or group lessons. Anyone who is registered at Hitzkirch Music School can join in with ensembles at no extra cost.

## ADULT LESSONS

---

- Weekly lesson, 30 or 40 minutes
- 10 lessons of your choice – available for a range of instruments – to be taken throughout the year (lessons to be booked in advance)

## OUR INSTRUMENTS/VOCAL TRAINING

---

**String instruments** – violin, Suzuki violin, cello, double bass\*, ukulele, acoustic guitar, electric guitar, bass guitar, harp\*

**Piano instruments** – piano\*, keyboard\*, accordion, Schwyzerörgeli accordion

**Vocal training** – solo singing/yodelling

**Woodwind instruments** – flute, panpipes, oboe, clarinet, saxophone, bassoon, soprano/alto recorder

**Brass instruments** – trumpet, cornet, horn, French horn, trombone, euphonium, baritone, tuba, alpine horn

**Percussion instruments** – drums, concert xylophone\*, percussion\*, djembé drum

\* Group lessons not available

## COSTS

Find out how much you can expect to pay.



**FOR CHILDREN AND TEENAGERS (UP TO 20 YEARS OLD)** Prices apply to the whole school year.

## PRIMARY MUSIC EDUCATION (PRIMARY SCHOOL)

---

Singing and Dancing (10 lessons)	50	Preschool and up
Xylophone 1 and 2, Recorder 1 and 2, Djembé 1 and 2	400	Year 1 and up

## INSTRUMENT LESSONS AND VOCAL TRAINING

---

Instrument or vocal training	Individual lesson		Group lesson (40/50 minutes)
	30 minutes	40 minutes	
<b>All instruments Or vocal training</b>	710	900	470

---

## PRICES FOR PUPILS AT SECONDARY SCHOOLS AND SPECIALIST SECONDARY SCHOOLS

---

**Compulsory** instrument lessons and vocal training at secondary schools and specialist secondary schools last for 40 minutes each and cost CHF 1030 for the year.

The prices for **optional** instrument lessons and vocal training are shown above.

## PRICES FOR ENSEMBLES

---

Ensembles are free of charge to pupils who are registered for instrument lessons at Hitzkirch Music School. Pupils who do not take instrument lessons at Hitzkirch Music School pay CHF 160 per school year for ensembles.

## FAMILY DISCOUNT

---

Families who have two or more children registered at the music school receive a **family discount:**

Families with 2 children\* registered at the music school                      **10%** discount on the total amount

Families with 3 or more children\* registered at the music school      **15%** discount on the total amount

\*Children who attend Music and Movement as part of their primary school lessons, sign up for short courses or attend ensembles do not count as being registered at the music school.

Families facing financial difficulties can apply for additional financial support through their local authority. Get in touch with your local authority directly for further details.

## FOR ADULTS (AGE 20+)

Weekly individual lesson	30 minutes	2080 per year
Weekly individual lesson	40 minutes	2775 per year
Weekly individual lesson	50 minutes	3470 per year
Fortnightly lesson		Half the price
10 lessons	30 minutes	555
10 lessons	40 minutes	740
10 lessons	50 minutes	925
10 lessons	60 minutes	1100

## GENERAL INFORMATION

Find out everything you need to know.



### LESSONS available to

---

Children, teenagers and adults living in the Aesch, Ermensee, Hitzkirch or Schongau areas.

### LESSONS

---

Duration:	One school year
Start date:	Two school weeks after the end of the summer holidays
Lesson time:	After school lessons, at lunchtime, on afternoons when no other lessons are scheduled (by prior arrangement)

### LESSON FEES

---

The lesson fees must be paid in advance. Please contact us to discuss payment in instalments.

### USE OF YOUR ADDRESS

---

You will receive our music school's **newsletter** 4–6 times a year. We are able to share your contact details with local music organisations to fulfil a specific purpose. If you do not want us to share your contact details, please let us know in writing.

### INSTRUMENT PRESENTATION, TASTER LESSONS, EVENTS

---

Our upcoming **events**, the date for our **instrument presentation** and information about **taster lessons** can be found under 'Agenda' on our website: [www.musikschule-hitzkirch.ch](http://www.musikschule-hitzkirch.ch).

## CONTACT

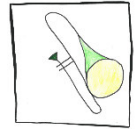
There are a number of ways you can get in touch with us.



Head of Music School, Geri Amrein  
Musikschulhaus, Bahnhofstrasse 1, 6285 Hitzkirch  
Tel. – 041 917 00 61  
Email – [schulleitung@musikschule-hitzkirch.ch](mailto:schulleitung@musikschule-hitzkirch.ch)  
Website – [www.musikschule-hitzkirch.ch](http://www.musikschule-hitzkirch.ch)

# Registration

We'll be delighted to welcome you.



Please register online at:

[www.musikschule-hitzkirch.ch/anmelden](http://www.musikschule-hitzkirch.ch/anmelden)

You must register for the whole school year. There is no option of cancelling your registration before the end of the school year. If you decide to stop attending, you will not be eligible to receive a refund on your lesson fees (this does not apply if you move away or need to stop for medical reasons that you can confirm with a doctor's note). If you wish to cancel your registration, please inform us in writing.